

gd vis por

CLAYSTONE: m brn gy- occ m gy, v sft-occ frm, amorph-subblky, stky, silty i/p, tr qtz gr, calc, occ carb, tr pyr, Note: sample washing out

SANDSTONE: gen a/a, pred m-c, bcmg pred m w/incr depth, mod wl srted

SANDSTONE: clr-v lt gy-occ wh & pl brn, f-c, dom f-m, mod wl srted, tr arg mtx washing out, tr sil cmt, gen lse, uncons, tr lse mica, rr lse pyr, gd vis por

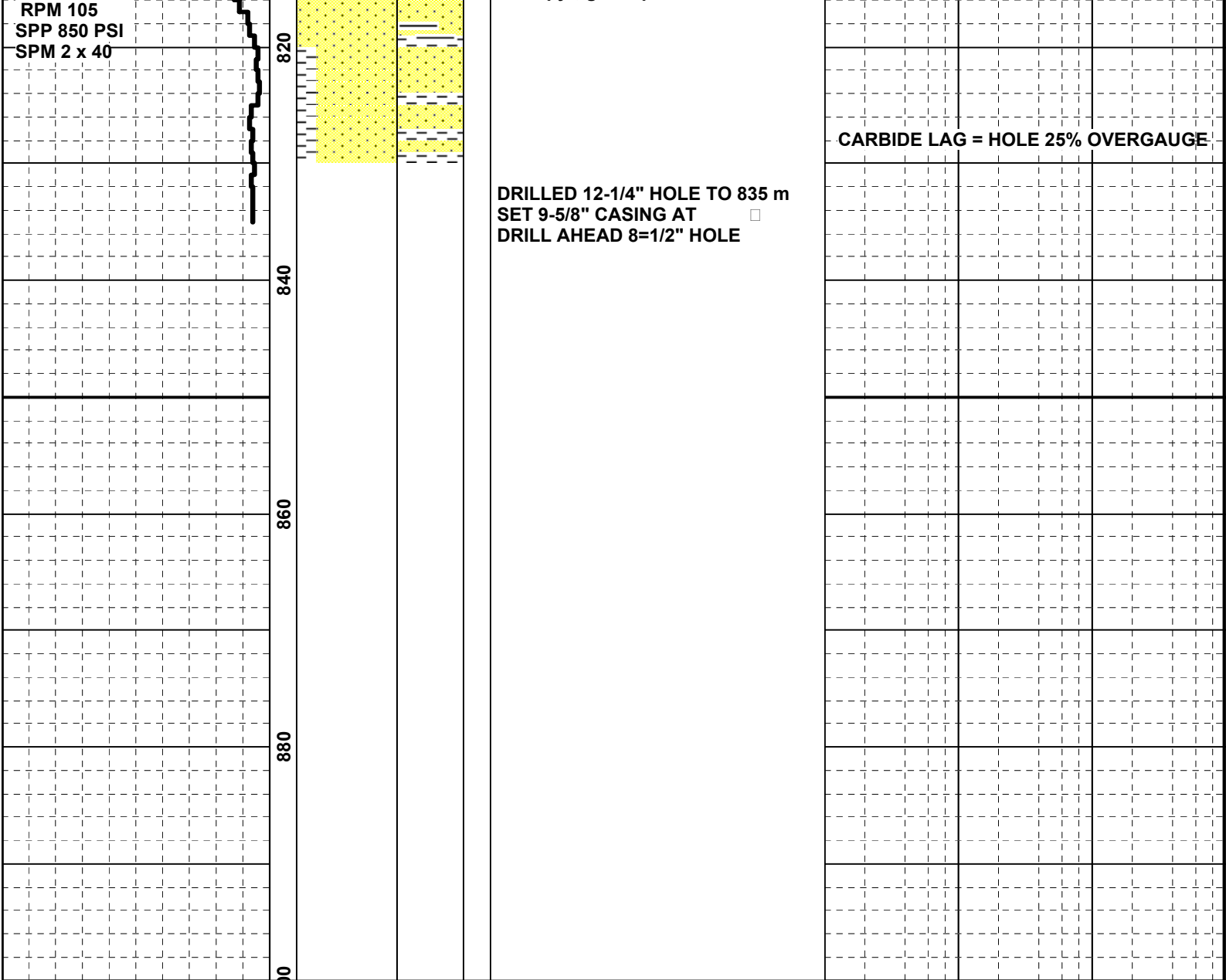
SANDSTONE: clr-v lt gy-v pl yel brn, m-crs, subang-rnd, v w srted, tr sil cmt, gen lse, rr lith frags, v gd inf por

SANDSTONE: class-clr-v lt gy-pl yel brn, f-crs dom m, subang-w rnd dom subrnd, w srted, rr tr arg mtl, gen clean & lse, tr sil cmt, tr liths, gd inf por

SANDSTONE: clr-v lt gy-pl yel brn-occ opq wh, f-crs dom m, subang-rnd dom subrnd, w srted, clean w/tr arg mtx, tr sil cmt, tr liths, tr lse pyr, gd inf por

SANDSTONE: clr-v lt gy-pl yel brn-occ opq wh, f-crs dom m, subang-rnd dom subrnd, w srted, clean w/tr arg mtx, tr sil cmt, tr liths, tr lse pyr, gd inf po

10	100	TG (ppm)	1000	10 ⁴
10	100	C1 (ppm)	1000	10 ⁴
10	100	C2 (ppm)	1000	10 ⁴
		C3 (ppm)		
10	100	C4 (ppm)	1000	10 ⁴
10	100		1000	10 ⁴
10	100	TG (ppm)	1000	10 ⁴
10	100	C1 (ppm)	1000	10 ⁴
10	100	C2 (ppm)	1000	10 ⁴
		C3 (ppm)		
10	100	C4 (ppm)	1000	10 ⁴
10	100		1000	10 ⁴



CARBIDE LAG = HOLE 25% OVERGAUGE

DRILLED 12-1/4" HOLE TO 835 m
 SET 9-5/8" CASING AT
 DRILL AHEAD 8-1/2" HOLE

100 ROP (metres/hr) 0 900

10	100	TG (ppm)	1000	10 ⁴
10	100	C1 (ppm)	1000	10 ⁴
10	100	C2 (ppm)	1000	10 ⁴
10	100	C3 (ppm)	1000	10 ⁴
10	100	C4 (ppm)	1000	10 ⁴